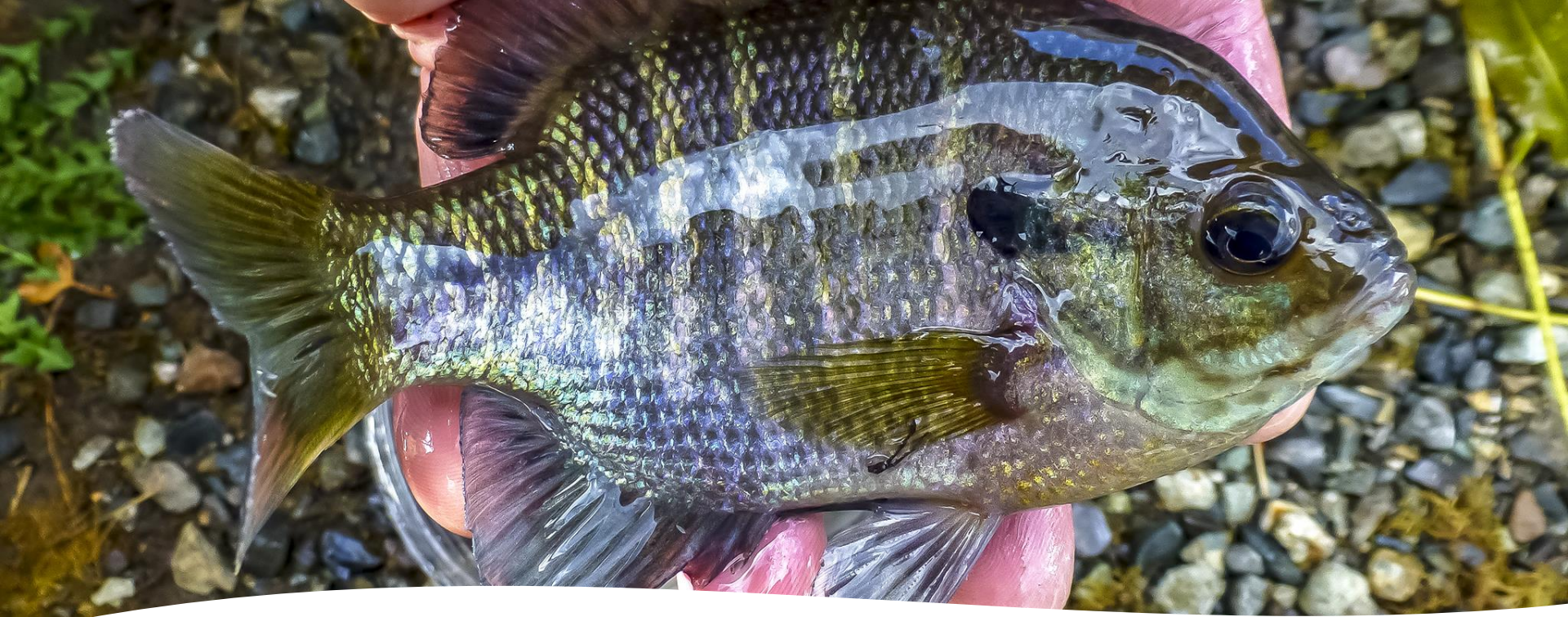


Non-Native Gamefish and Fisheries Policy

(2023 review)

Steve Caromile
Inland Fish Program Manager





AGENDA

- Guidance
- Policy background
- Reporting
- Questions



LEGISLATIVE GUIDANCE - 2SB 1579

Sec. 2. A new section is added to chapter 77.08 RCW (actually 77.12.085) to read as follows:

The commission shall adopt rules to liberalize bag limits for bass, walleye, and channel catfish in all anadromous waters of the state in order to reduce the predation risk to salmon smolts.



FWC GUIDANCE

- **Blue Sheet** (Advisory Group Mission)

The Ad-hoc Non-native Gamefish and Fisheries Advisory Group will consult with fisheries managers and agency leadership and provide recommendations to the department with the objective of developing a policy that:

- Supports the protection and recovery of native species
- Systematically applies available science to what is known about non-native species impacts on vulnerable native species and attempt to fashion fisheries that meet the needs and interests of non-native gamefish anglers where possible.





POLICY C-3632

Non-native Gamefish and Fisheries

Policy Elements

- Population Management
- Fishing Regulations
- Introduction/Translocation
- Habitat
- Illegal Introduction
- Control



Six Water Types

- Rivers, Streams, and Beaver Ponds
 - w/ native anadromous fish
 - w/ native species of concern
 - w/o native species of concern
- Lakes, Ponds, and Reservoirs
 - w/ native anadromous fish
 - w/ native species of concern
 - w/ limited or no connectivity, or no anadromy



Evaluation and Reporting

- Action(s) implemented under the guidance of this policy will be evaluated to determine the effectiveness in achieving desired goals.
- The WDFW will provide an annual summary to the Commission that describes action(s), their status, and their efficacy as implemented under the guidance of this policy.





Actions (2023)

Columbia River Dam Angling

- Angling program was expanded to include bass, walleye, and channel catfish to the NPM dam angling removal programs.
- These species often account for appx 30% of the total number of fish encountered by the anglers.
- SEPA completed January 26, 2023.



Interagency agreement (MOA)

- An agreement is currently in development for the targeted removal of Eastern Brook Trout in the upper Yakima basin.
- To aid in Bull Trout recovery.



NNGF control in Angle Lake

- Following a report from the University of Washington, WDFW conducted a survey to detect the presence of illegally introduced walleye in a small western Washington lake. Walleye were collected and removed.



YY Brook Trout Project

- Sullivan and Mill creeks
 - Westslope Cutthroat and Bull Trout restoration efforts.
- Uses trojan Y chromosome (M_{yy}) to produce all male (EBT) offspring.
- Coupled with removal efforts shows promising results.



Warmwater gamefish management

- Fall Walleye Index Netting (FWIN) and Creel
 - The warmwater program continues its annual assessment of walleye fisheries among our reservoirs without anadromy or species of conservation concern, netting occurred at Moses Lake, Scootenev Reservoir and Lake Roosevelt. Year-round creel was conducted at Moses Lake.



Warmwater management cont.

- Spring Bass Electrofishing survey
 - The warmwater program conducted a lake-wide electrofishing survey (Moses Lake) to assess the bass population and collect baseline data for future comparison of a habitat enhancement project in the southern portion of the lake.





Questions?