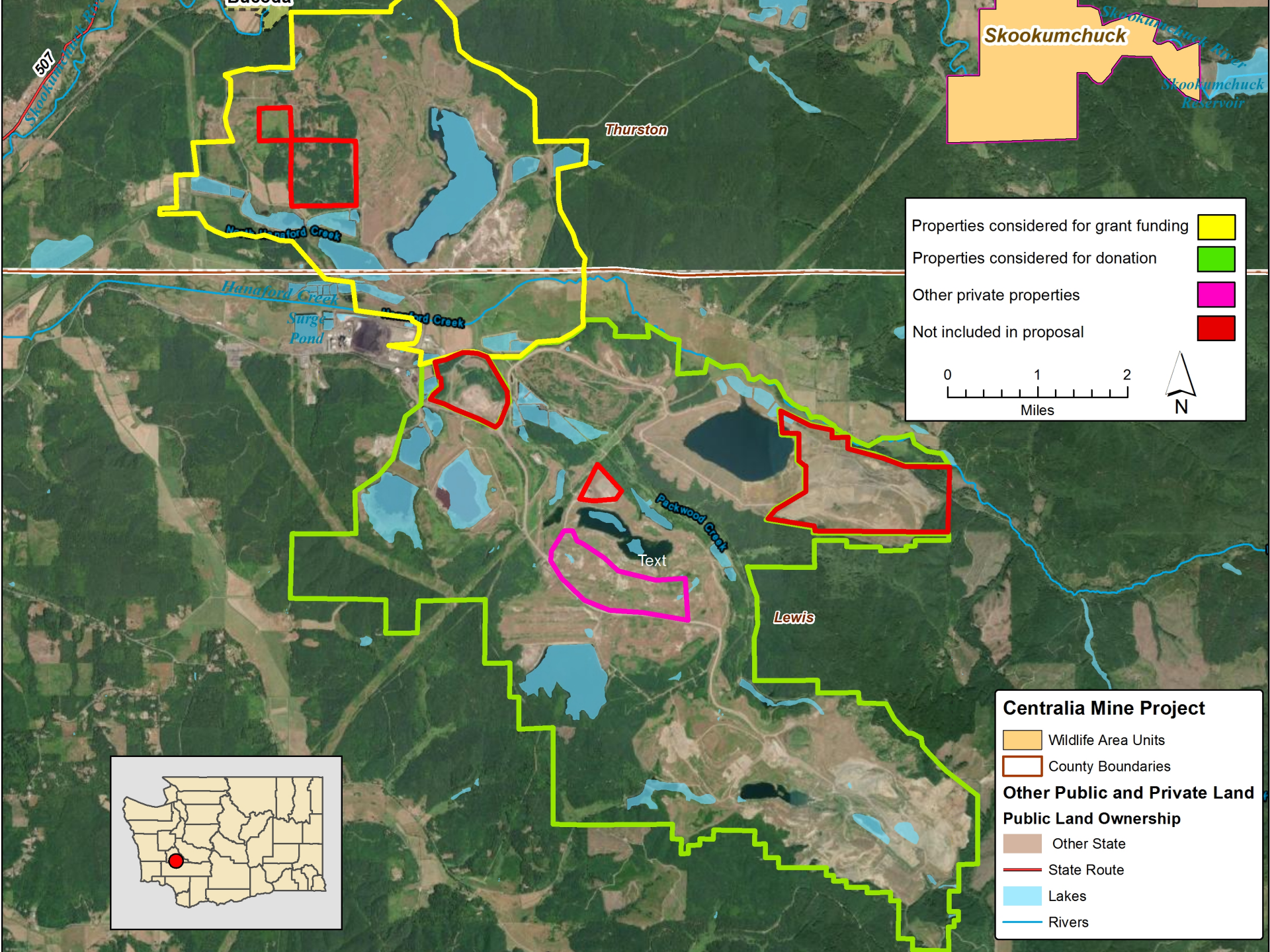




Project Highlights

- Up to 9,800 acres
- Multi-phased project of donation and acquisition of the Centralia Mine
- Diverse array of habitats that already exist at the site
- Property will form a new wildlife area close to urban centers allowing users to connect with diverse nature
- Current habitat supports a variety of fish and wildlife including elk, deer, salmon, warmwater fish, and many others
- Rare opportunity to manage a landscape that allows room for creation or restoration of high-quality wildlife habitats such as wetlands and grasslands to benefit waterfowl, amphibians, mammals, reptiles, and fish.
- Potential to provide habitat for threatened or endangered species, including the western pond turtle, Oregon spotted frog, and streaked horned lark
- Adding public lands to the region would benefit the local economy as well as public access
- Supported by TransAlta USA, Rocky Mountain Elk Foundation



Skookumchuck

Thurston

North Hanford Creek

Hanford Creek

Surg Pond

Hanford Creek

Peckwood Creek

Text

Lewis

Properties considered for grant funding █

Properties considered for donation █

Other private properties █

Not included in proposal █

0 1 2
Miles

N

Centralia Mine Project

█ Wildlife Area Units

█ County Boundaries

Other Public and Private Land

Public Land Ownership

█ Other State

— State Route

█ Lakes

— Rivers

