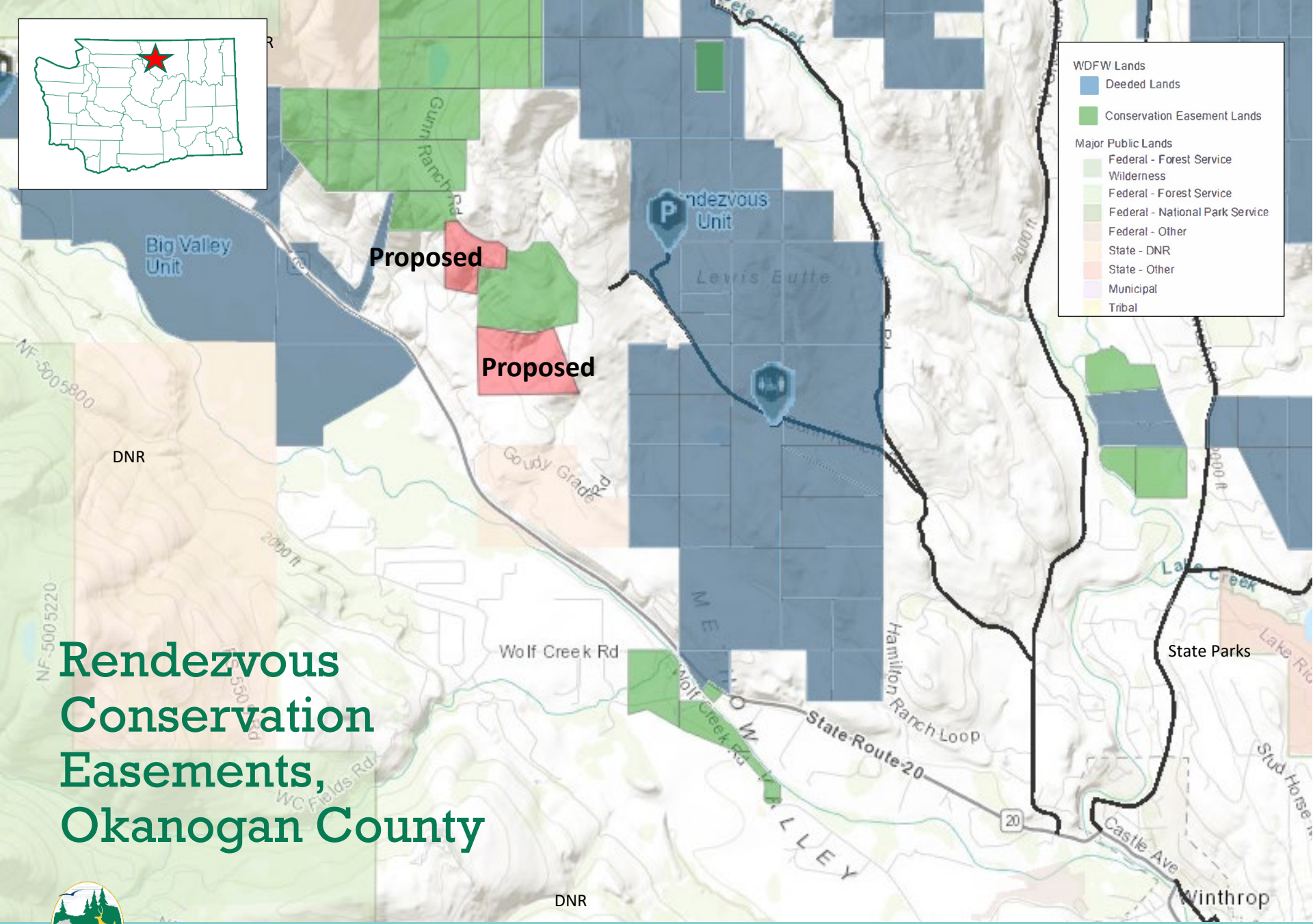


WDFW Lands

- Deeded Lands
- Conservation Easement Lands

Major Public Lands

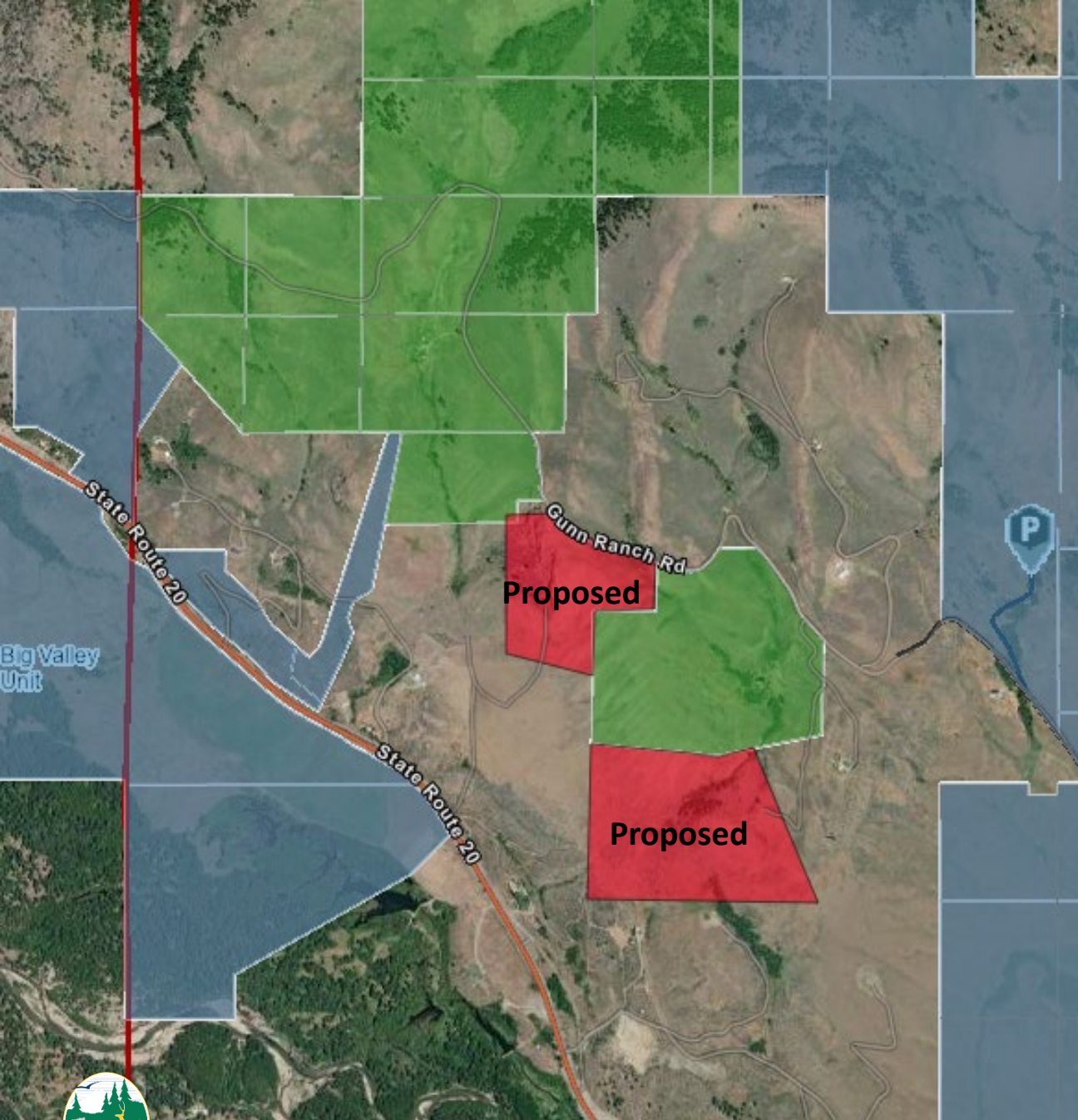
- Federal - Forest Service
- Wilderness
- Federal - Forest Service
- Federal - National Park Service
- Federal - Other
- State - DNR
- State - Other
- Municipal
- Tribal



Rendezvous Conservation Easements, Okanogan County



Rendezvous Conservation Easements, Okanogan County



- This proposed project consists of two properties totaling approximately 148 acres near the Rendezvous Unit of the Methow Wildlife area, adjacent to other conservation easement lands.
- This acquisition may be through conservation easements or fee simple acquisition.



Rendezvous Conservation Easements, Okanogan County

- This acquisition would protect state imperiled Inter- Mountain Basins Big Sagebrush Steppe.
- These parcels are within a crucial mule deer migration corridor or stop over area on their journey to and from higher elevations of the Okanogan National Forest or Pasayten Wilderness Area.
- Recreational opportunities include hunting and wildlife viewing and will give the public the chance to experience high-quality shrubsteppe.
- If acquired by conservation easement public access may be restricted.

